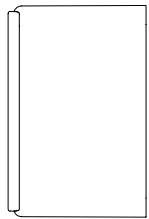
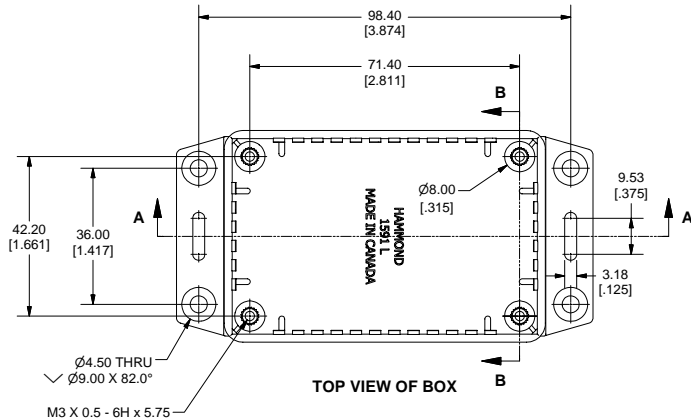


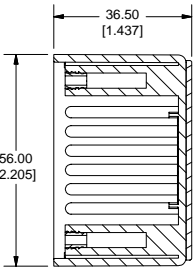
# 1591LF Enclosure



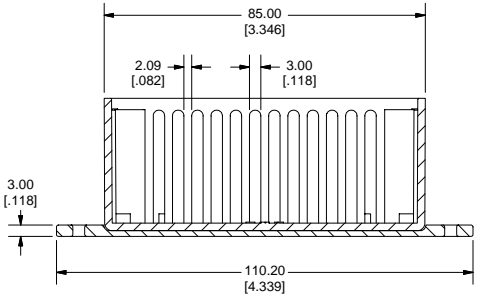
SIDE VIEW OF BOX



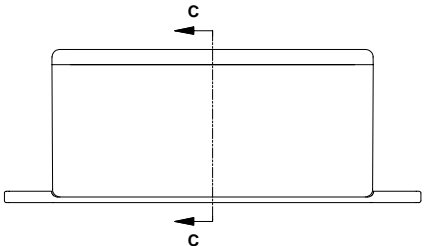
TOP VIEW OF BOX



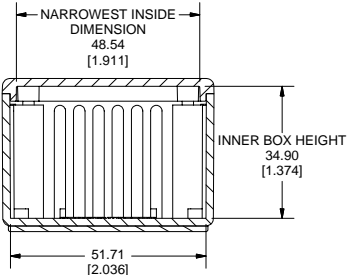
SECTION B-B



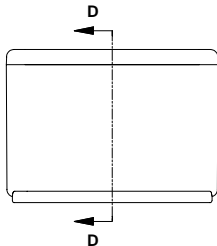
SECTION A-A



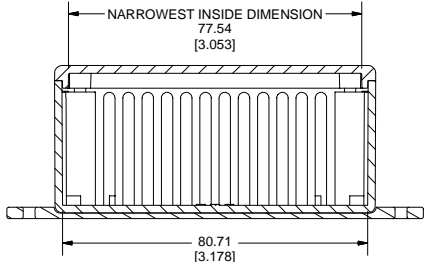
SIDE VIEW OF ASSEMBLY



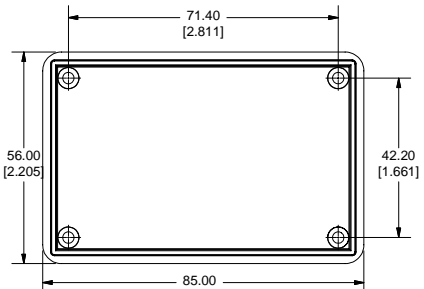
SECTION C-C



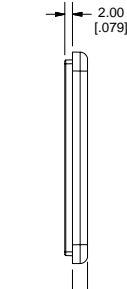
END VIEW OF ASSEMBLY



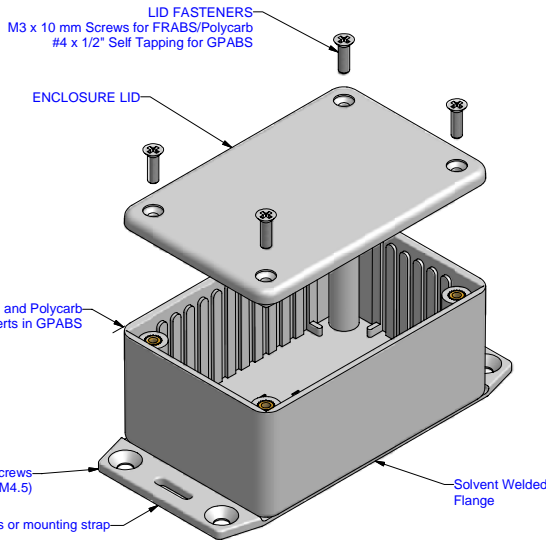
SECTION D-D



BOTTOM VIEW OF LID



SIDE VIEW OF LID



EXPLODED VIEW OF ENCLOSURE

**Note:**  
Enclosures can be Factory Modified ( Milling, Drilling, Printing etc. )  
Solid models of this enclosure available in STEP or IGES Format.  
Contact Factory [mjm@hammondmfg.com](mailto:mjm@hammondmfg.com)

**HAMMOND MANUFACTURING™**  
[www.hammondmfg.com](http://www.hammondmfg.com)

PART NUMBERS		
1591L Flanged Box Enclosures		
Material	Colour	Part Number
FR ABS	Black	1591LF2BK
UL94 - V0	Grey	1591LF2GY
GP ABS	Black	1591LF2SBK
	Grey	1591LF2SGY
Accessories		
Description	Part Number	
PC Board Card Adapters	See Accessories Section	
Clear Lids - clear, flame retardant polycarbonate - Lid ONLY	1591LC	
FR ABS Replacement Screws, Flat Head Phillips Nickel Plated Pkg of 100	1591MS100	
GP ABS Self Tapping Pkg of 100	1591TS100	
	1591TS100BK ( Black)	
Recommended Torque on Fasteners (no lubrication)		
M3 - 0.5 x 10mm Screws	30-40 cN'm	
#4 x 0.5 Screws	30-40 cN'm	